

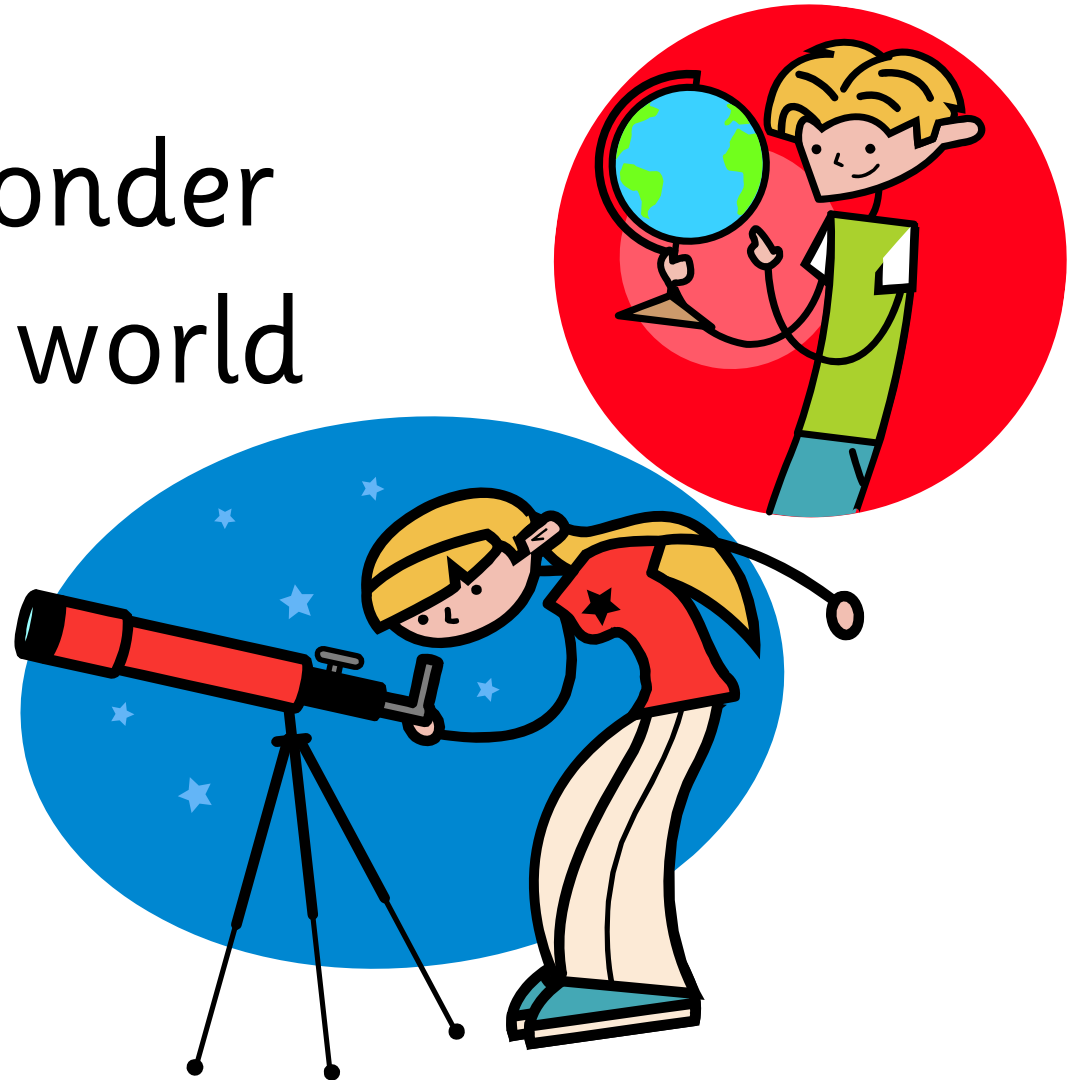
Essential Elements

Attitudes



Appreciation

I appreciate the wonder
and beauty of the world
and its people.



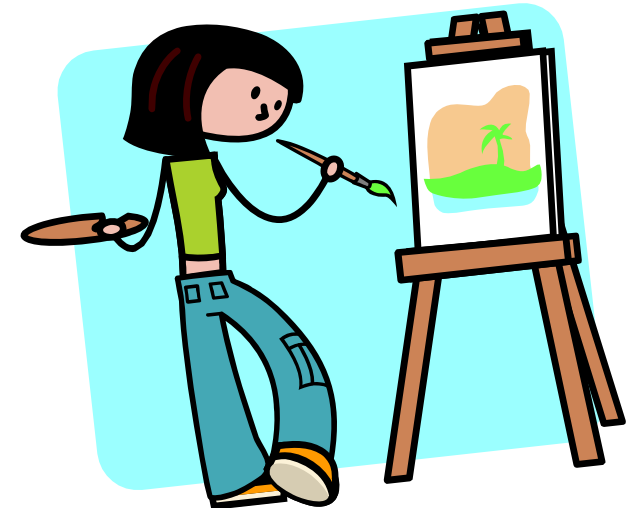
Commitment

I am committed to my own learning, I persevere and I show self discipline and responsibility.



Confidence

I feel confident in my ability as a learner. I have the courage to take risks, apply what I have learned and make appropriate decisions and choices.



Cooperation

I can **cooperate**,
collaborate,
lead *or* follow
as the situation
demands.



Creativity

I am creative and imaginative in both my thinking and in my approach to problems and dilemmas.



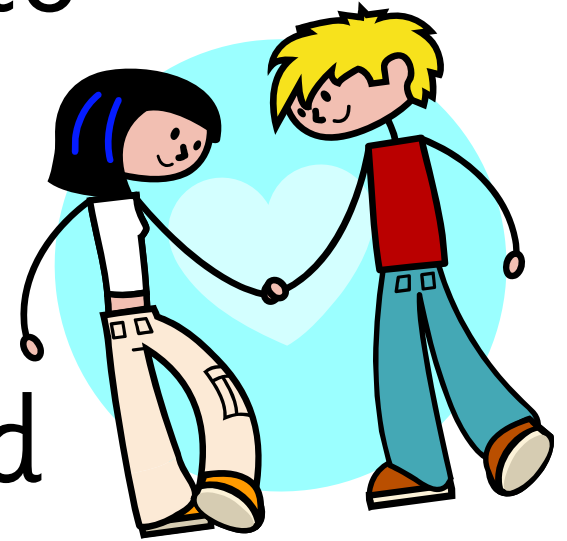
Curiosity

I am curious about the nature of learning, about the world, its people and cultures.



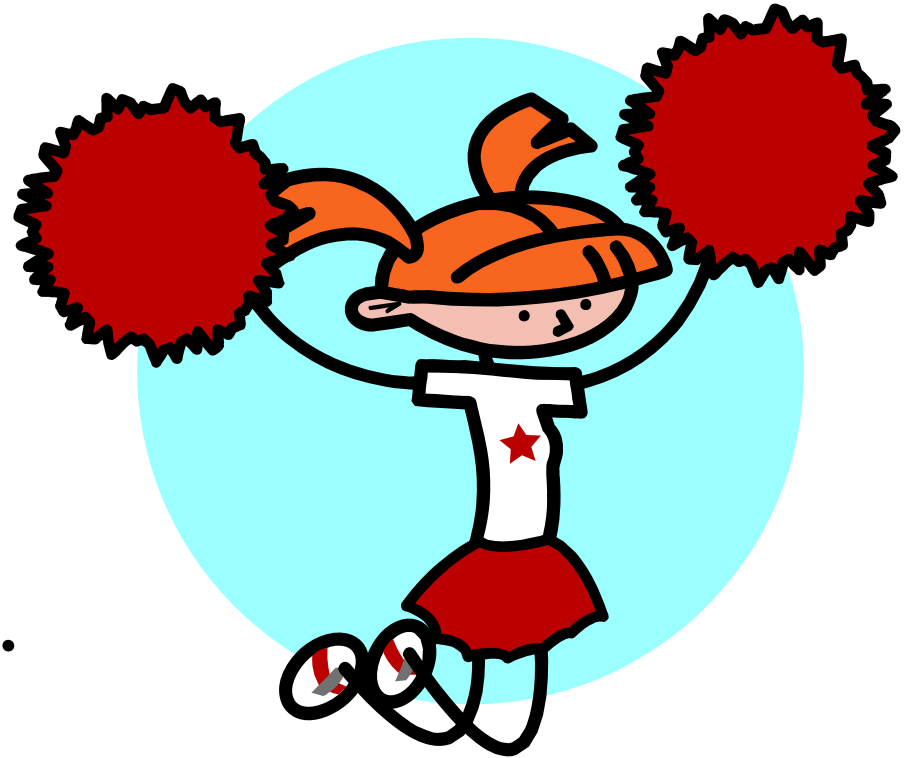
Empathy

I can imagine myself in another's situation in order to understand his or her reasoning and emotions, so as to be open-minded and reflective about the perspectives of others.



Enthusiasm

I enjoy learning
and willingly put
effort into the process.



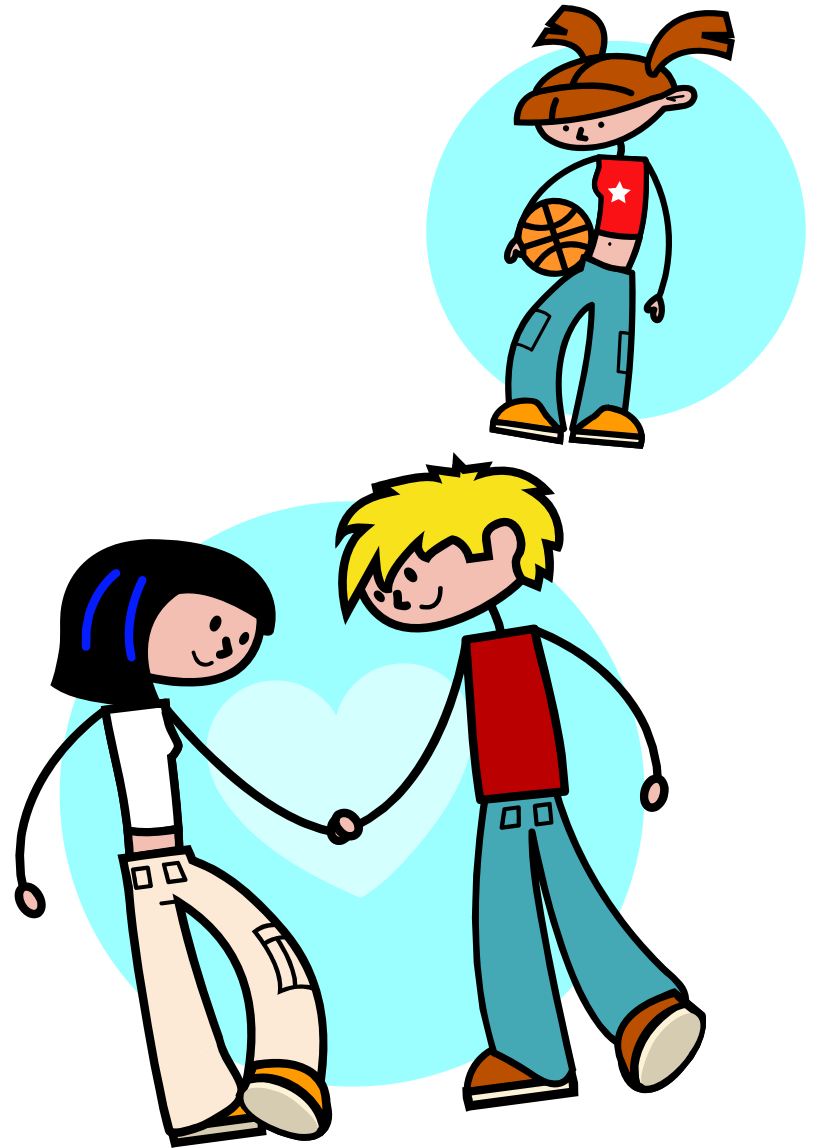
Independence

I think and act independently,
making my own judgments
based on reasoned argument,
and I am able to defend
these judgments.



Integrity

I am honest and I demonstrate a considered sense of fairness.



Respect

I respect myself,
others and the
world around me.



Tolerance

I am sensitive about differences and diversity in the world and I am responsive to the needs of others.

